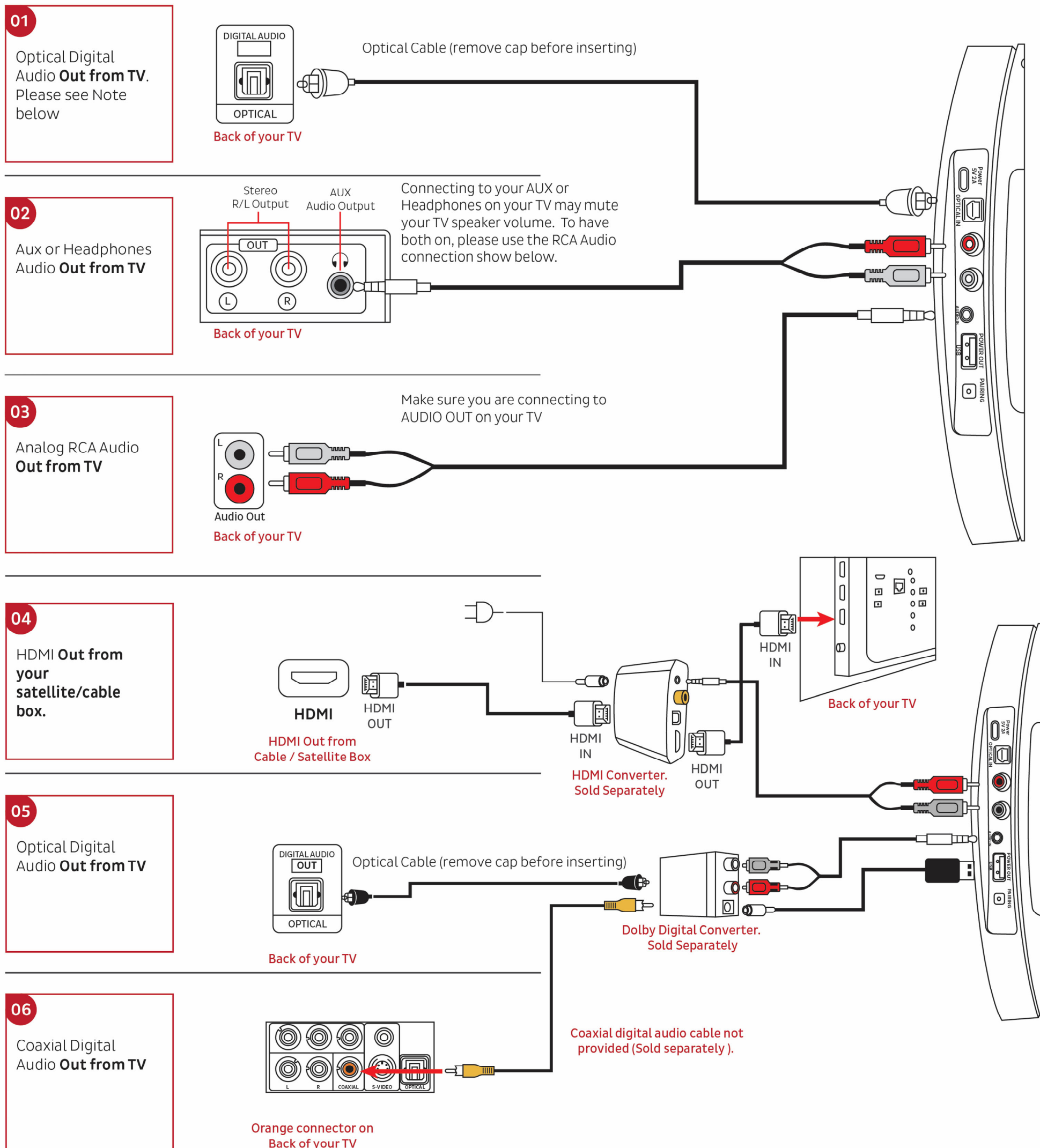


A small business established since 2002, Serene Innovations' assistive technology has made life easier for thousands of customers in the U.S. and around the world. Traditionally, we have designed and manufactured practical solutions for seniors and others with hearing, vision, and mobility challenges to navigate everyday tasks that most people take for granted—like talking on the phone, watching TV, listening for the doorbell or emergency alarms, and monitoring smart phone notifications. We want you to be completely satisfied with your TV-SoundBox. Please read the instructions below to connect your wireless speaker, if you still need help please visit our website www.sereneinnovations.com and chat with our Customer Support or call us toll free at 866-376-9271.

Check the back Of your TV to make sure you have any one of the following "AUDIO OUT" connections shown below.

Only use one of the connections shown below.



NOTE: When using Optical Digital Audio connection please access your TV audio menu and set the audio format to "PCM".

Some streaming services such as Netflix may stream some content with Dolby Digital Audio format that the TV-SoundBox will not be able to decode.

To listen to streaming services transmitting Dolby Digital Audio you need a Dolby Digital Converter (sold separately). Please refer to connection #5 or #6 above for details on how to connect using Dolby Digital converter. You may purchase the converter from our website www.sereneinnovations.com